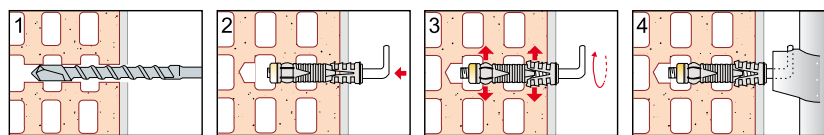
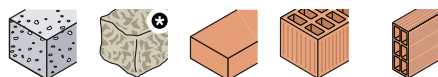


## TDE

### Boiler fixing

Fixation pour chauffe-eau



### Double expansion nylon plug white zinc plated corner screw

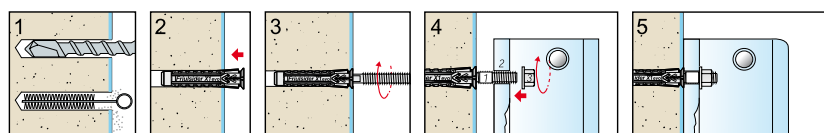
Cheville à double expansion nylon  
gond zingué blanc

Code	Plug Cheville Ø x L	Corner screw Gond	Pkg.	Pkg./ Outerbox Cond.
63000b10075	14x75	M10	2	50

## FBD

### Flushing tank wall fixing

Fixation pour chasse d'eau à parois



### Nylon plug and nut, white zinc plated screw

Cheville et écrou nylon, vis zingué blanc

Code	Plug Cheville Ø x L	Screw Vis Ø x L	Pkg.	Pkg./ Outerbox Cond.
61600b08100	10x50	M8x100	2	50